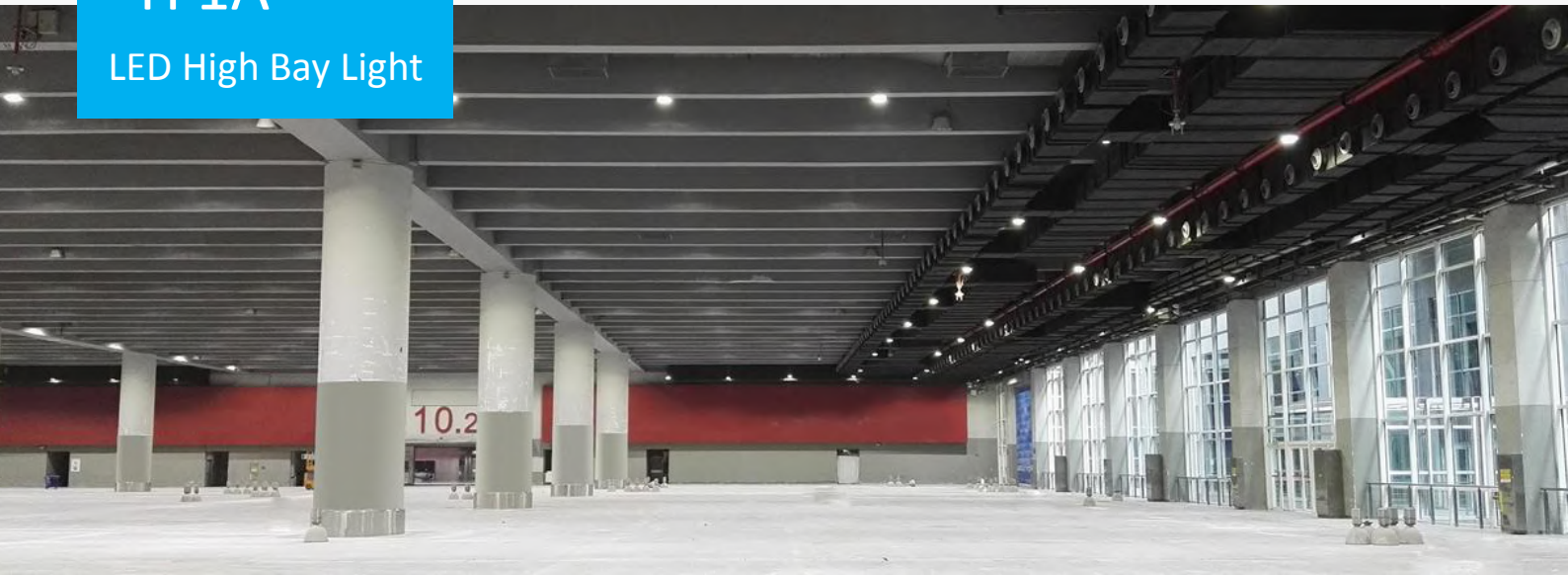


TF1A




LED High Bay Light



Specifications

Input Voltage:	100 ~ 277Vac
Input Frequency:	50 / 60Hz
Power Factor:	0.95
Surge Protection Level:	10kV line-earth
Working Environment:	-40°C ~ +50°C, 10% ~ 90% RH
CCT:	3000K, 4000K, 5000K, 5700K
CRI:	≥70
Housing:	Extrusion, Die Casting
IP Rating of LED Light Engine	IP68
IP Rating of LED Driver:	IP67
Impact Resistance	IK08
Warranty:	5 Years Limited

Finishing Colors

	Gray		Black
	White		Blue

Applications

- Large industrial hall (production, processing, machining....)
- Large indoor area (warehouse, logistic hall, supermarket, sport club, exhibition center...)

Features

Construction

- Whole structure heating dissipation design with efficient thermal conduction, radiation and convection.
- Unique patented IP68 LED light engines.
- Tool-less onsite replacement of light engines greatly reduces maintenance cost.

Electrical

- Flexible to reach desired power consumption by choosing appropriate light engines.

Optical

- Ergonomic and specialized lighting distributions available for various lighting applications.

Installation

- Angle adjustable within $\pm 60^\circ$ with mounting brackets.

Photos



TF1A

LED High Bay Light

Ordering Information

Example: TF1A-4-240-M16B-BA-28-3160-7040-CM-MO-GY

Luminaire Type		Module Qty	System Power	LED Module	LED Package	Cable Standard	LED Qty per Module						
TF	High bay light	1	1 module	40	40W	M1A	M1A module	A	3535	A	CCC+VDE	18	18pcs
		2	2 modules	50	50W		M2A		M2A module		C		PSE
		3	3 modules	60	60W	M8B		M8B module	C	3030		H	UL
			M16B	M16B module		B	5050		X
7	7 modules	350	350W	420	420W	28		28pcs					

Lens Code		CRI & CCT		Brand of LEDs		Driver Brand		Housing Color	
1010	110degree	7030	Ra≥70, CCT 3000K	LU	LUMILEDS	MO	MOSO	BK	Black
3040	Type Vs Short	7040	Ra≥70, CCT 4000K	CM	LUMILEDS	IN	INVENTRONICS	WH	White
1908	12 degree	7050	Ra≥70, CCT 5000K	Customized		PH	PHILIPS	BU	Blue
3725	25 degree	7057	Ra≥70, CCT 5700K	SS	SAMSUNG	MW	MEAN WELL	GY	Gray
3540	40 degree			NI	NICHIA	XX	Others		
				CR	CREE				
				LN	LUMINUS				
				XX	Others				
1325	25 degree	5390	90 degree						
5340	40 degree	1310	Lambertian type						
2360	60 degree								
3125	25 degree	2114	Type V Short						
3140	40 degree	2040	Type V Short						
3160	60 degree	2212	Type II Short						
2190	90 degree	1113	Type III Short						
2211	90x40 degree	2501	60x60 degree						
2310	Lambertian type	2502	80x80 degree						
3504	80x40 degree	2503	80x50 degree						
3505	70x30 degree								

Performance

Model	Power (W)	Module M1A/M2A-VA-18		Module M8B-VC-63		Module M16B-VB-18		Module M16B-VB-28	
		Efficacy (lm/W)	Flux (lm)	Efficacy (lm/W)	Flux (lm)	Efficacy (lm/W)	Flux (lm)	Efficacy (lm/W)	Flux (lm)
TF1A-1	40	130	5200	135	5400	152	6080	168	6720
	50	122	6100	130	6500	145	7250	163	8150
	60	117	7020	122	7320	133	7980	155	9300
TF1A-2	80	137	10960	140	11200	160	12800	175	14000
	100	130	13000	135	13500	150	15000	170	17000
	120	122	14640	127	15240	140	16800	163	19560
TF1A-3	120	137	16440	140	16800	160	19200	175	21000
	150	130	19500	135	20250	150	22500	170	25500
	180	122	21960	127	22860	140	25200	163	29340
TF1A-4	160	137	21920	140	22400	160	25600	175	28000
	200	130	26000	135	27000	150	30000	170	34000
	240	122	29280	127	30480	140	33600	163	39120
TF1A-5	200	137	27400	140	28000	160	32000	175	35000
	250	130	32500	135	33750	150	37500	170	42500
	300	122	36600	127	38100	140	42000	163	48900
TF1A-6	240	137	32880	140	33600	160	38400	175	42000
	300	130	39000	135	40500	150	45000	170	51000
	360	122	43920	127	45720	140	50400	163	58680
TF1A-7	280	137	38360	140	39200	160	44800	175	49000
	350	130	45500	135	47250	150	52500	170	59500
	420	122	51240	127	53340	140	58800	163	68460

Note: 1. Values shown are subject to ±5%~±8% tolerance.

2. Efficacy of Ra70 3000K is 5% lower than other CCT≥4000K.

TF1A

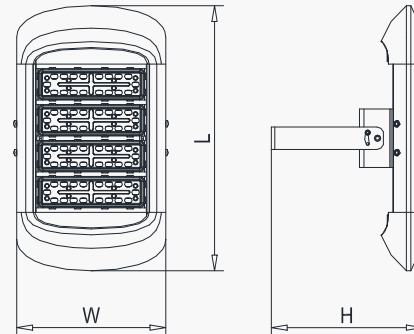
LED High Bay Light

Product Dimensions

Model	L (mm)	W (mm)	H (mm)	N.W. (kg)
TF1A-1	350	350	335	4.8
TF1A-2	430	350	335	6.4
TF1A-3	510	350	335	7.4
TF1A-4	590	350	335	8.3
TF1A-5	670	350	475	11.1
TF1A-6	750	350	475	12.5

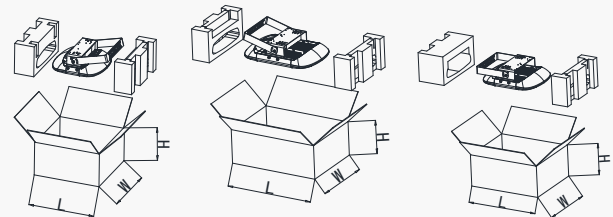
TF1A-7 830 350 475 13.7

Notes: Typical values above. Actual N.W. is subject to tolerance of 5%.



Package Information

Model	L (mm)	W (mm)	H (mm)	G.W. (kg)
TF1A-1	450	430	230	5.9
TF1A-2	520	430	230	7.9
TF1A-3	600	430	230	8.9
TF1A-4	680	430	230	9.9
TF1A-5	785	430	230	12.9
TF1A-6	840	430	230	14.4
TF1A-7	920	430	230	15.6



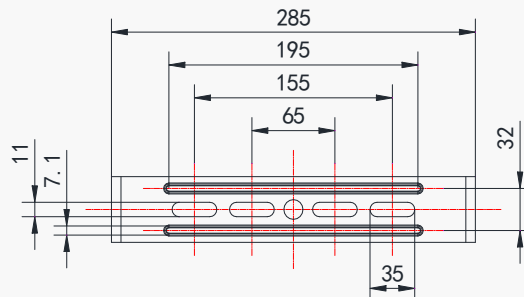
TF1A-1

TF1A-2/ -5/ -6/ -7

TF1A-3/ -4

Notes: Typical values above. Actual G.W. is subject to tolerance of 5%.

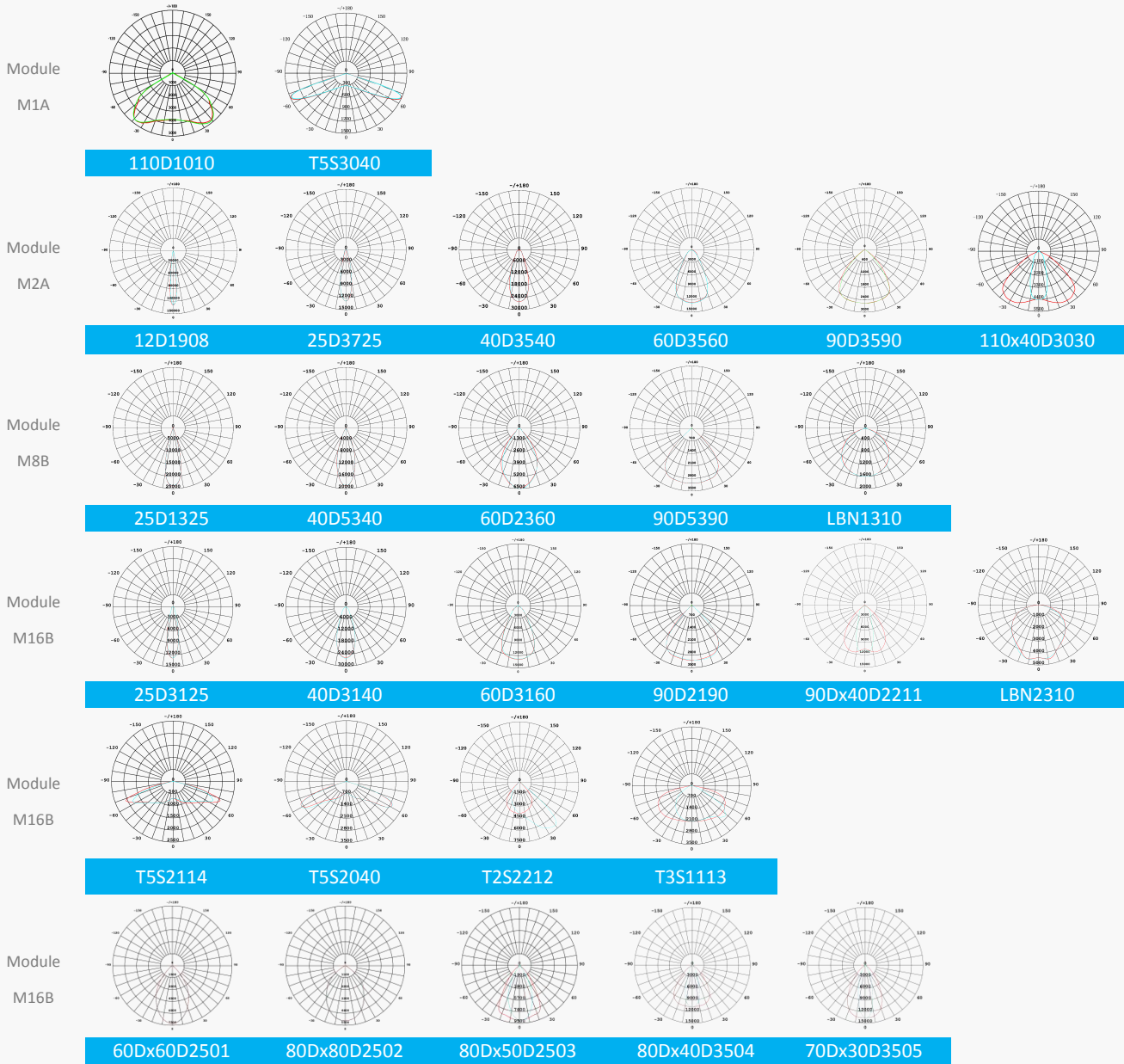
Installation Bracket



TF1A

LED High Bay Light

Typical Distributions



Version History

Change Date	Version	Item	Description of Change	
			From	To
2016/12/22	Ver2.0	Datasheets release		
2017/05/09	Ver2.1	Light distribution		Updated
2017/11/29	Ver2.2	M8 Efficacy & Dimensions		Updated
2019/08/26	Ver. 3.0	New format Efficacy upgrade New lighting distributions added	/	/