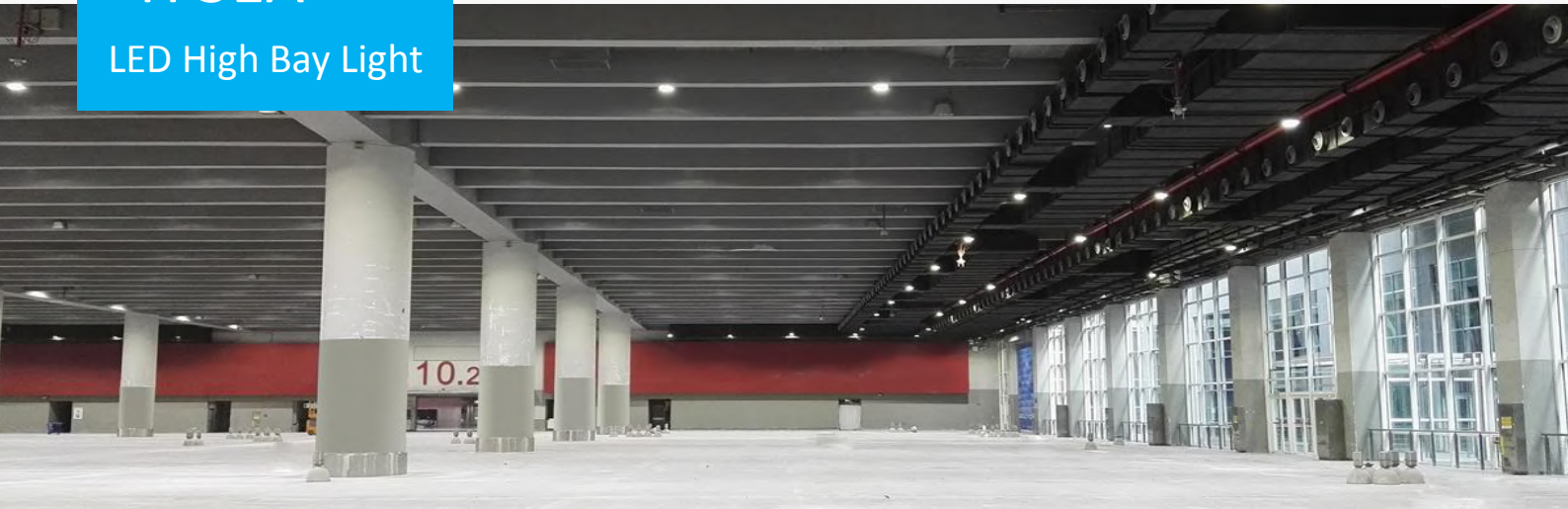


TF31A

LED High Bay Light



Specifications

Input Voltage:	100 ~ 277Vac
Input Frequency:	50 / 60Hz
Power Factor:	0.95
Surge Protection Level:	10kV line-earth
Working Environment:	-40°C ~ +50°C, 10% ~ 90% RH
CCT:	3000K, 4000K, 5000K, 5700K
CRI:	≥70
Housing:	Extrusion, Galvanized Steel
IP Rating of LED Engine:	IP68
IP Rating of LED Driver:	IP67
Impact Resistance	IK09
Warranty:	5 Years Limited

Bracket Colors

■ Gray

Applications

- Sports facilities (stadium, football field, golf course....)
- Traffic arteries (airport, crossroad....)
- Advertisement (wall, billboard....)

Features

Construction

- Whole structure heating dissipation design with efficient thermal conduction, radiation and convection.
- Unique patented IP68 LED light engines.
- Tool-less onsite replacement of light engines greatly reduces maintenance cost.

Electrical

- Flexible to reach desired power consumption by choosing appropriate light engines.

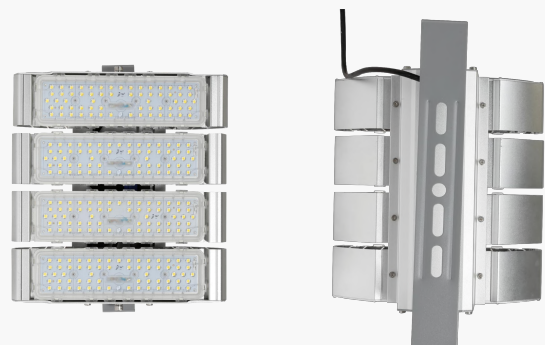
Optical

- Ergonomic and specialized lighting distributions available for various area lighting.

Installation

- Bracket adjustable within 180°.

Photos



TF31A

LED High Bay Light

Ordering Information

Example: TF31A-4-240-M31A-CA-63-2360-7040-LU-MO-GY

Luminaire Type	Module Qty	System Power	LED Module	LED Package	Cable Standard	LED Qty per Module	
TF High Bay light 31A 31A series	1 1 module	40 40W	M31A M31A module	A 3535	A CCC+VDE	18 18pcs	
	2 2 modules	50 50W		C 3030	C PSE	63 63pcs	
	3 3 modules	60 60W		B 5050	H UL	18 18pcs	
	4 4 modules			X Others		28 28pcs
	5 5 modules	200 200W 240 240W 250 250W					

Lens Code	CRI & CCT	Brand of LEDs	Driver Brand	Bracket Color
1908 12 degree	7030 Ra≥70, CCT 3000K	LU LUMILEDS	IN INVENTRONICS	GY Gray
3725 25 degree	7040 Ra≥70, CCT 4000K	CM LUMILEDS	MO MOSO	
3540 40 degree	7050 Ra≥70, CCT 5000K	Customized	PH PHILIPS	
1325 25 degree	7057 Ra≥70, CCT 5700K	SS SAMSUNG	MW MEAN WELL	
5340 40 degree		NI NICHIA	AD ADAYO	
2360 60 degree		CR CREE	XX Others	
3125 25 degree		LN LUMINUS		
3140 40 degree		XX Others		
3160 60 degree				
2190 90 degree				
2211 90x40 degree				
2310 Lambertian type				
3504 80x40 degree				
3505 70x30 degree				

Performance

Model	Power (W)	Module M31A-XA-18		Module M31A-XC-63		Module M31A-XB-18		Module M31A-VB-28	
		Efficacy (lm/W)	Flux (lm)	Efficacy (lm/W)	Flux (lm)	Efficacy (lm/W)	Flux (lm)	Efficacy (lm/W)	Flux (lm)
TF31A-1	40	130	5200	135	5400	152	6080	168	6720
	50	122	6100	130	6500	145	7250	163	8150
	60	117	7020	122	7320	133	7980	155	9300
TF31A-2	80	137	10960	140	11200	160	12800	175	14000
	100	130	13000	135	13500	150	15000	170	17000
	120	122	14640	127	15240	140	16800	163	19560
TF31A-3	120	137	16440	140	16800	160	19200	175	21000
	150	130	19500	135	20250	150	22500	170	25500
	180	122	21960	127	22860	140	25200	163	29340
TF31A-4	160	137	21920	140	22400	160	25600	175	28000
	200	130	26000	135	27000	150	30000	170	34000
	240	122	29280	127	30480	140	33600	163	39120
TF31A-5	200	137	27400	140	28000	160	32000	175	35000
	250	130	32500	135	33750	150	37500	170	42500

Note: 1. Values shown are subject to ±5%~±8% tolerance

2. Efficacy of Ra70 3000K is 5% lower than that of CCT≥4000K

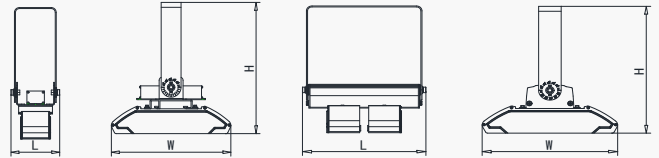
TF31A

LED High Bay Light

Product Dimensions

Model	L (mm)	W1 (mm)	H (mm)	N.W. (kg)	Tilt Range
TF31A-1	120	300	335	2.0	360°
TF31A-2	275	300	325	3.8	180°
TF31A-3	275	300	325	4.3	180°
TF31A-4	355	300	325	5.2	180°
TF31A-5	435	300	325	6.1	180°

Notes: Typical values above. N.W. tolerance: 5%. Dimension tolerance: ± 5 mm



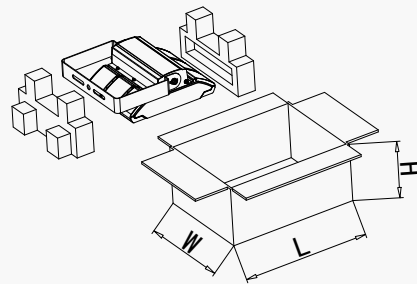
TF31A-1

TF31A-2/ -3/ -4/ -5

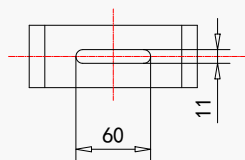
Package Information

Model	L (mm)	W (mm)	H (mm)	G.W. (kg)
TF31A-1	415	185	200	2.8
TF31A-2	415	355	190	4.8
TF31A-3	415	355	190	5.5
TF31A-4	415	395	190	6.3
TF31A-5	415	475	190	7.5

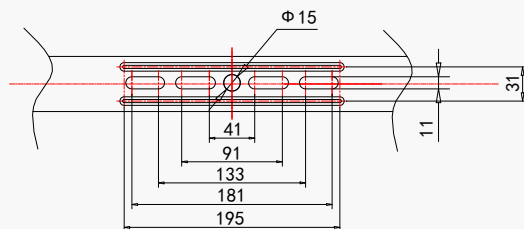
Notes: Typical values above. G.W. tolerance: 5%. Dimension tolerance: ± 5 mm



Installation Bracket



TF31A-1



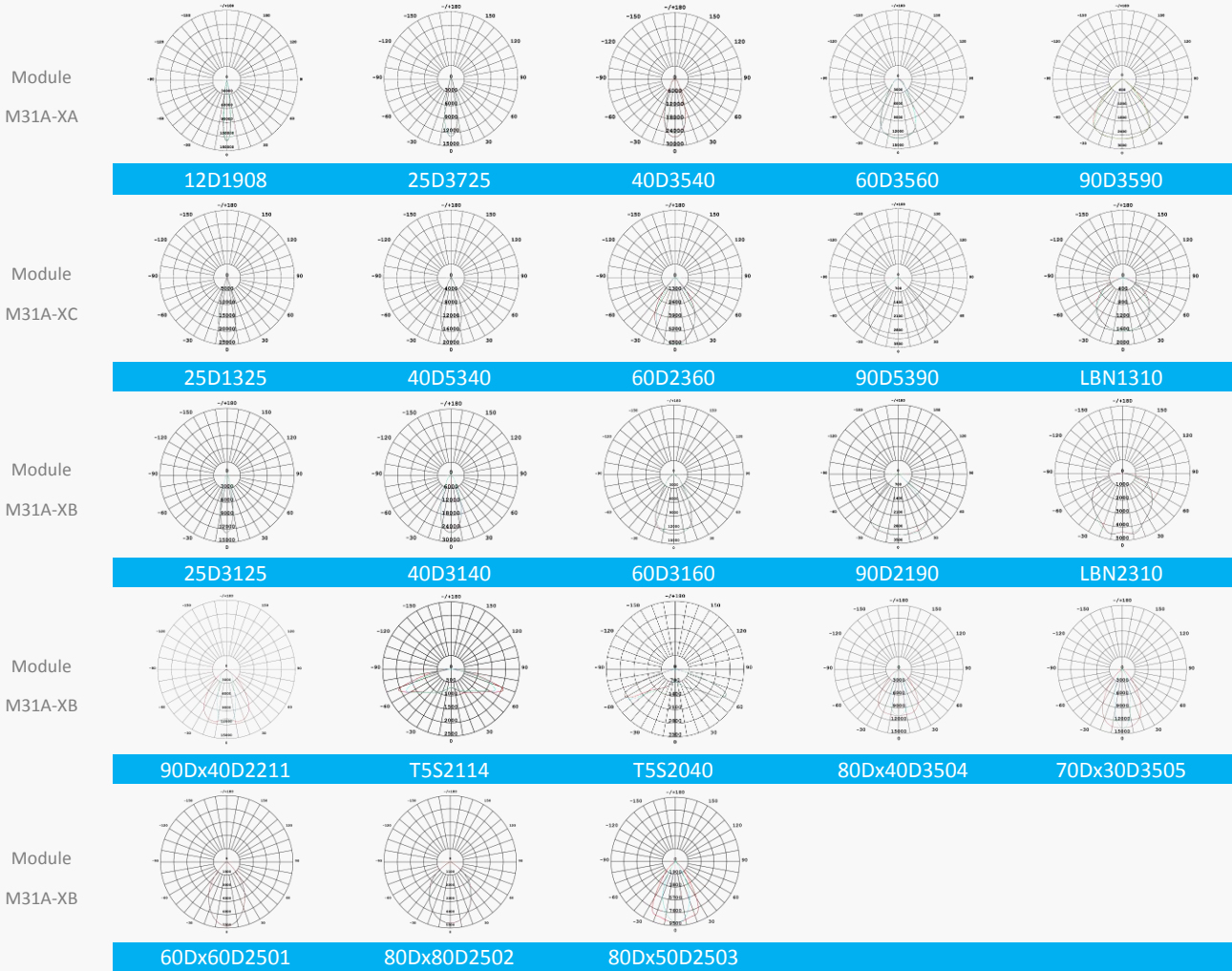
TF31A-2/ -3/ -4/ -5

Notes: Typical values above. Tolerance: ± 0.5 mm.

TF31A

LED High Bay Light

Typical Distributions



Version History

Change Date	Version	Item	Description of Change	
			From	To
2019/11/29	Ver. 3.0	New format		
2021/5/28	Ver. 3.1	Lighting distribution options correction	T2S2212, T3S1113 of M31A-XB	Delete