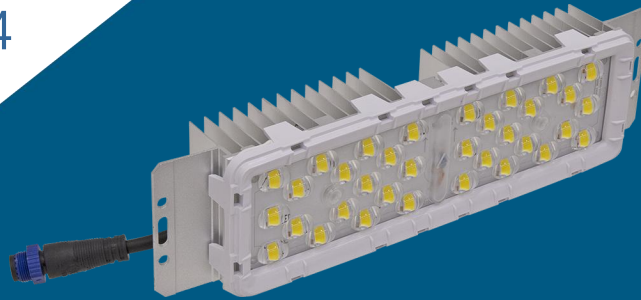
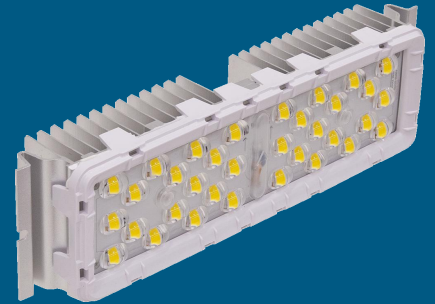


## LED Module M16A-34 Series



M16A-CB



M16A-VB

## Specification

**Working Environment:** -40°C~+50°C

**Storage Temperature:** -40°C~+50°C

**Relative humidity:** 10%~90%RH

**Typical value of pad temperature<sup>[1]</sup>:** 60°C

**IP Rating of LED Light Engine:** IP68

**Impact Protection Level:** IK09

**Color Temperature (CCT)<sup>[2]</sup>:** 3000K, 4000K, 5000K, 5700K

**Main Material:** Aluminum 6063

### Note :

[1] Typical values of pad temperature is obtained based on 60W with a ambient temperature of 25°C.

[2] Efficacy of 3000K is 5% lower than other CCTs.

## Features

- Super long lifetime(Lumen maintenance);
- Multiple lighting distributions available;
- Wide applicability for complex situations;
- High versatility apply for all sorts of lamps retrofit.

## Application

- Street lighting retrofit and application;
- Factory lighting retrofit and application;
- Tunnel lighting retrofit and application;
- Sports lighting retrofit and application.

## Ordering Information

For example: M16A-CBA-34 -2136-7040-HPW

Module Model	Interface	Dimension of LEDS	Wire Standard	LED Qty	Lens Model		Ra & CCT		LED Brand	
M16A	C : CSA V : V shape	B : 5050	A: CCC+VDE	34: 34PCS	2143	40°	2136	Type II Short	7030 : Ra≥70 , 3000K	HPW: Hpwinner
					1141	60°	2138	Type III Medium	7040 : Ra≥70 , 4000K	
					1142	90°			7050 : Ra≥70 , 5000K 7057 : Ra≥70 , 5700K	

## Performance

Module Model	Power (W)	Driving current (mA)	Input voltage (Vdc)	Efficacy (lm/W)	Lumens (lm)
M16A-CB/VB-34	40	700	50~64	190	7600
M16A-CB/VB-34	50	850	50~64	185	9250
M16A-CB/VB-34	60	1000	50~64	180	10800

Note: Values shown are subject to ±5%~±8% tolerance; Cable default A type;

Efficacy above is based on calculated @92% power efficiency: Light efficacy of 3000K is 5% lower than other CCTs.

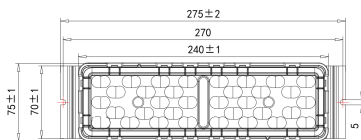
## Product and Package Dimensions

Module Model	Product Dimensions			Package Size			N.W (kg)	Module pcs/carton (PCS)	Package weight (kg)
	L (mm)	W (mm)	H (mm)	L (mm)	W (mm)	H (mm)			
M16A-VB	275	75	48	590	340	180	0.52	20	11.2
M16A-CB	300	75	48	630	340	180	0.52	20	11.1

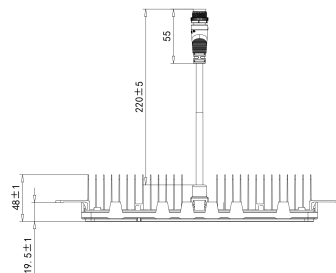
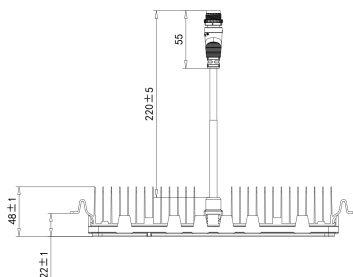
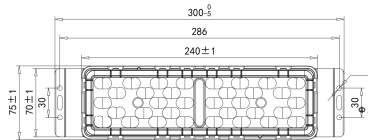
Note: Values shown are subject to ±5% tolerance. Tolerance: ±0.5mm

## Product Diagram

M16A-VB-34

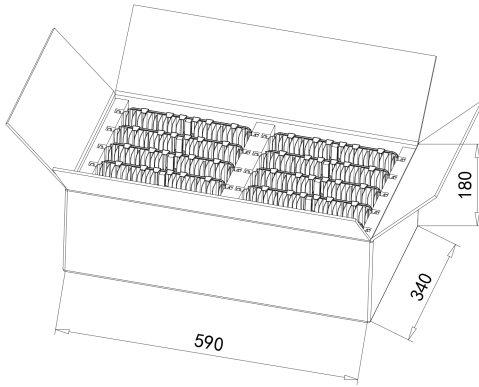


M16A-CB-34

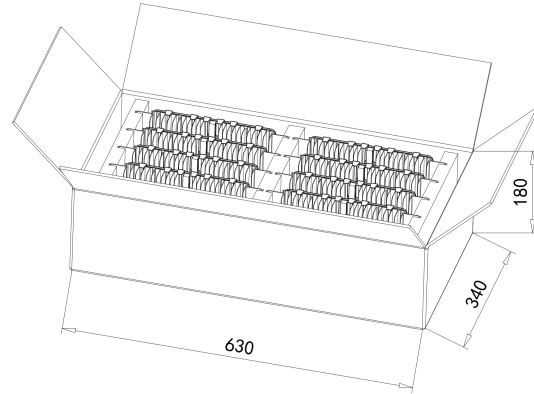


## Packaging Diagram

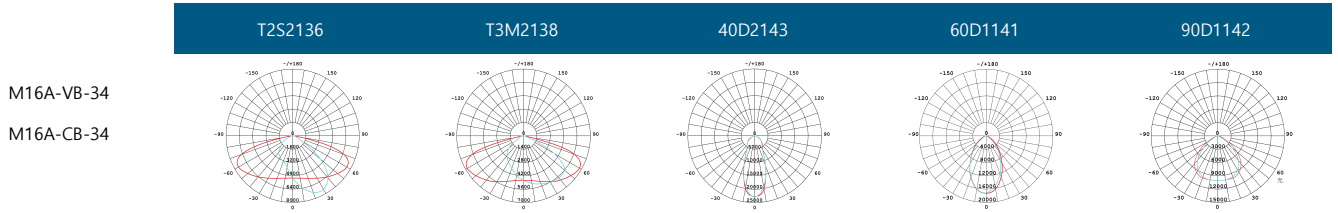
M16A-VB-34



M16A-CB-34



## Lighting distributions



## Version History

Change Date	Version	Description of Change		
		Item	From	To
20230531	Ver1.0	/	/	/