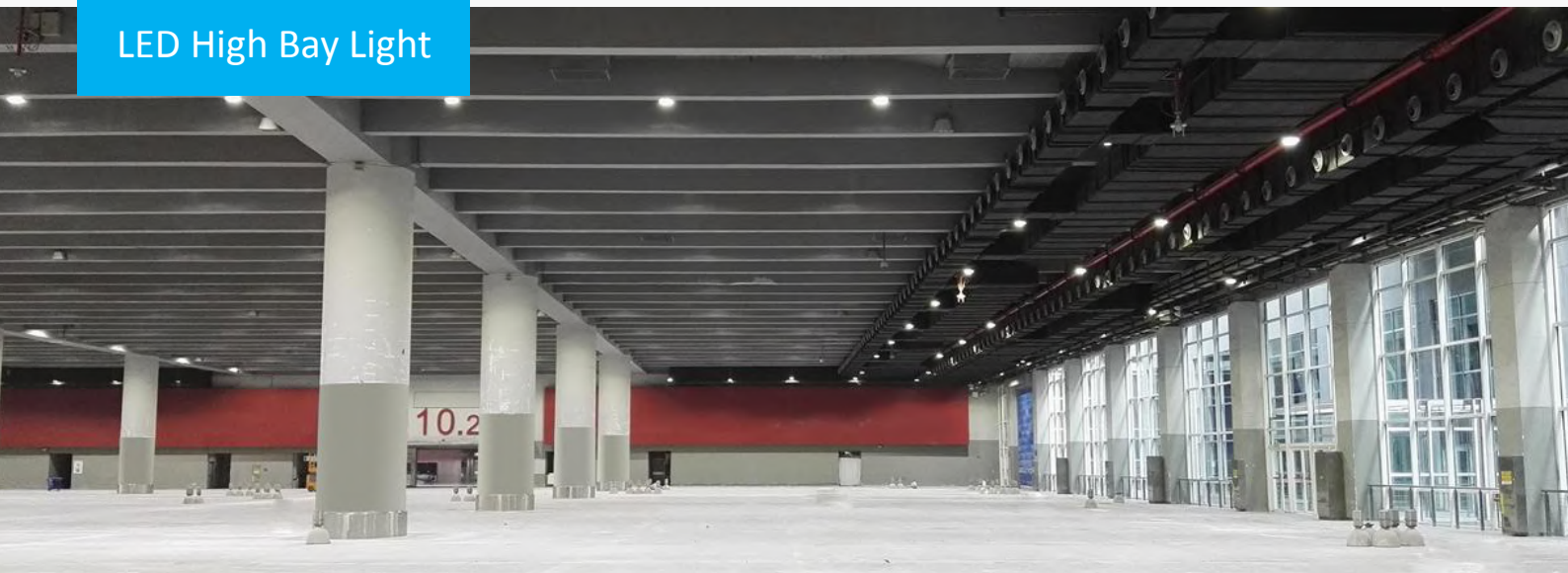


# TF9 Series

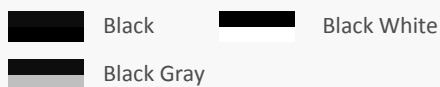
## LED High Bay Light



### Specifications

<b>Input Voltage:</b>	100 ~ 240Vac
<b>Input Frequency:</b>	50 / 60Hz
<b>Power Factor (PF):</b>	0.95
<b>Surge Protection Level:</b>	6kV line-earth. (For ≤60W, 4kV line-earth)
<b>Operating Environment:</b>	-40°C ~ +50°C, 10% ~ 90% RH
<b>Color Temperature (CCT):</b>	3000K, 4000K, 5000K, 5700K
<b>Color Rendering Index (CRI):</b>	≥70
<b>Housing:</b>	Die-cast aluminum
<b>IP Rating of LED Light Engine:</b>	IP68
<b>IP Rating of LED Driver:</b>	IP65
<b>Warranty:</b>	5 Years Limited

### Finishing Colors



### Features

#### Construction

- Unique patented IP68 LED light engines;
- Whole structure heating dissipation design with efficient thermal conduction, radiation and convection.

#### Electrical

- Flexible to reach desired power consumption by choosing appropriate light engines and drivers.

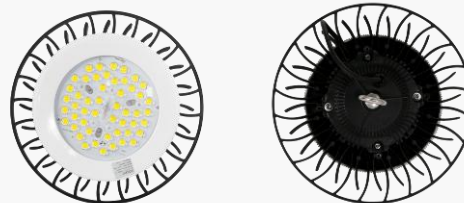
#### Optical

- Ergonomic and uniform lighting distribution designs.
- Unmatched lighting performance, driver stability and desirable lifespan;

### Applications

- Factory facilities (plant, office, warehouse....)
- Area lighting (exhibition hall, convention center, garage....)
- Indoor sports facilities (gym, club...)

### Photos



# TF9 Series

LED High Bay Light

## Ordering Information

Example: TF9C-N1-100-BA-32-5760-7040-CM-MO-BK

Luminaire Type	Module Qty	System Power	LED Package	Cable Standard	LED Qty per Module
<b>TF</b> High bay light	<b>N1</b> 1 Module	<b>60</b> 60W <b>80</b> 80W <b>100</b> 100W <b>120</b> 120W <b>150</b> 150W	<b>B</b> 5050 LEDs	<b>A</b> CCC+VDE <b>C</b> PSE <b>H</b> UL <b>X</b> OTHERS	<b>18</b> 18pcs <b>26</b> 26pcs <b>28</b> 28pcs <b>32</b> 32pcs <b>40</b> 40pcs <b>50</b> 50pcs
<b>9A</b> 9A series <b>9B</b> 9B series <b>9C</b> 9C series					
Lens Code	CRI & CCT	Brand of LEDs	Driver Brand	Housing Color	
<b>2960</b> 60 degree <b>1760</b> 60 degree <b>5760</b> 60 degree	<b>2990</b> 90 degree <b>1790</b> 90 degree <b>5790</b> 90 degree	<b>7030</b> Ra≥70, 3000K <b>7040</b> Ra≥70, 3000K <b>7050</b> Ra≥70, 3000K <b>7057</b> Ra≥70, 3000K	<b>CM</b> Lumileds Customized <b>XX</b> Others	<b>MO</b> MOSO <b>XX</b> Others	<b>BK</b> Black <b>BKWH</b> Black White <b>BKGY</b> Black Gray

## Performance

Model	Power (W)	LED Quantity (pcs)	Efficacy (lm/W)	Flux (lm)	CRI	CCT (K)
TF9A	60	18	136	8160	≥70	3000, 4000, 5000, 5700
TF9B	60	18	136	8160		
	80	26	145	11600		
TF9C	80	28	147	11760		
	100	32	144	14400		
	120	40	145	17400		
	150	50	145	21750		

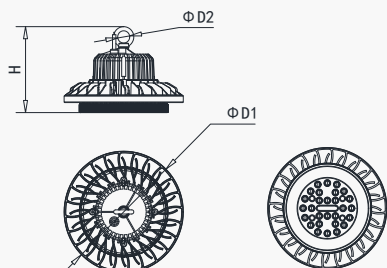
Note: 1. Values shown are subject to ±5%~±8% tolerance.

2. Efficacy and flux above refers to Ra70, CCT≥4000K. Efficacy of 3000K is 5% lower.

## Product Dimensions

Model	Power	Φ D1 (mm)	H (mm)	Φ D2 (mm)	N.W. (kg)
TF9A	60	Φ 210	195	Φ 19.4	2.1
TF9B	80	Φ 250	200	Φ 25.4	2.8
TF9C	100	Φ 315	220	Φ 25.4	4.3
TF9C	120	Φ 315	220	Φ 25.4	4.3
TF9C	150	Φ 315	220	Φ 25.4	4.6

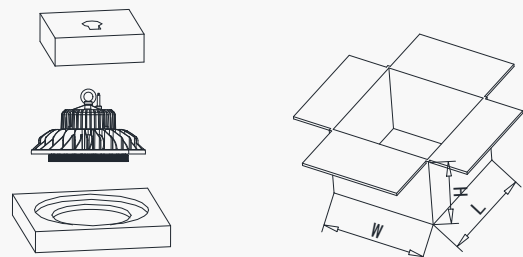
Notes: Typical values above. Tolerance of H and N.W. with different drivers: 5%



## Package Information

Model	Power	L (mm)	W (mm)	H (mm)	G.W. (kg)
TF9A	60	285	285	250	2.8
TF9B	80	320	320	255	3.6
TF9C	100	390	390	285	5.1
TF9C	120	390	390	285	5.1
TF9C	150	390	390	285	5.4

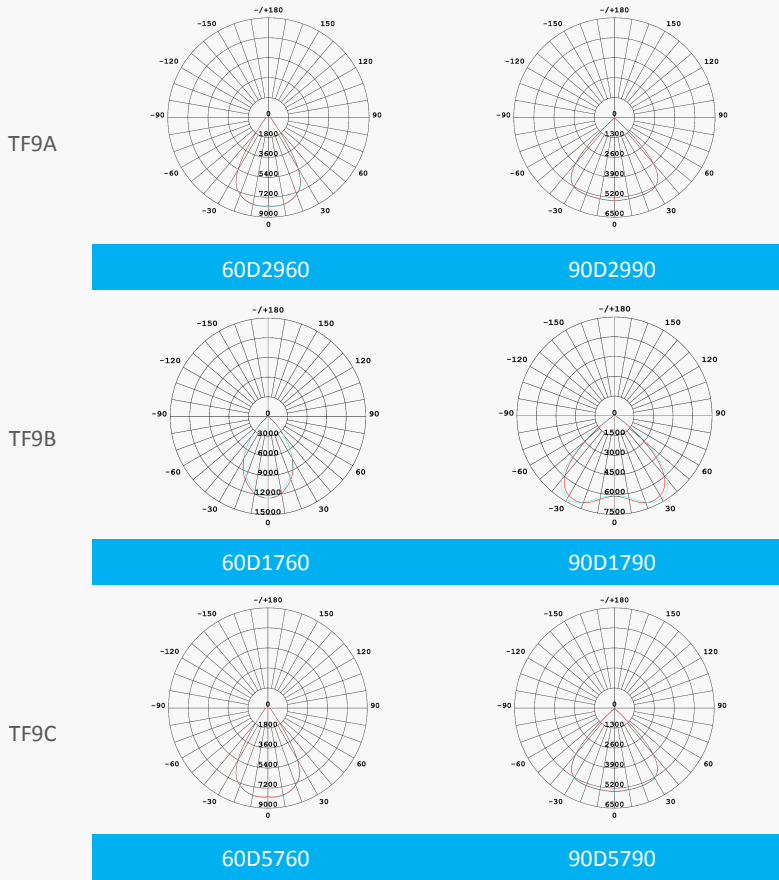
Notes: Typical values above. Tolerance of G.W. with different drivers: 5%



# TF9 Series

LED High Bay Light

## Typical Distributions



## Version History

Change Date	Version	Item	Description of Change	
			From	To
2018/10/11	Ver. 2.0	Datasheets release	/	/
2018/11/28	Ver. 2.1	TF9B lighting distribution curves		
2019/09/18	Ver3.0	Datasheet in new format Driver solution	/ MOSO LTP series drivers	/ MOSO MTP series drivers